

SCHEDULE:

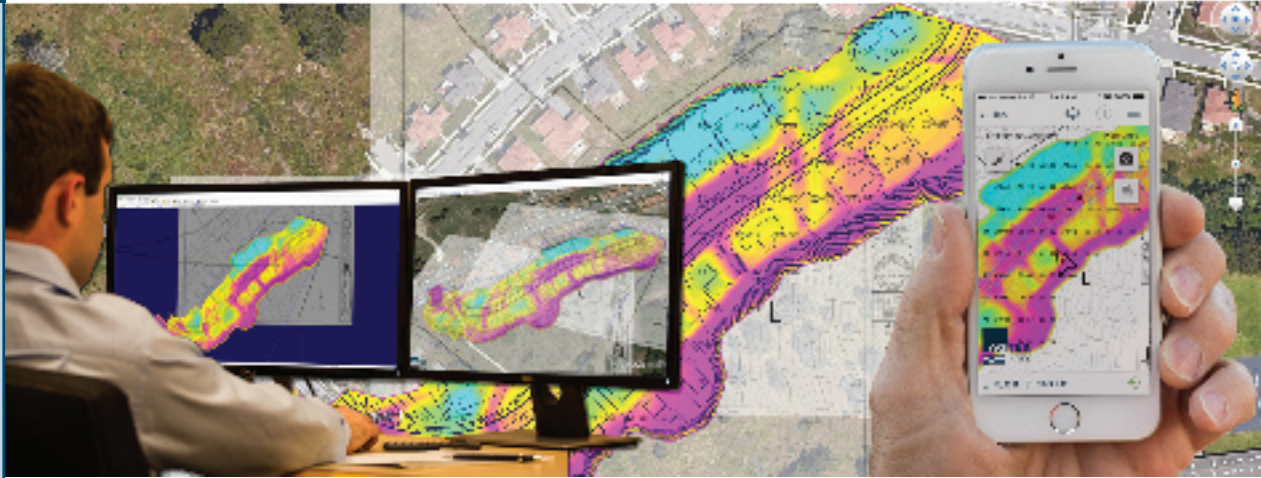
M T W Th F

- Jan. 9, 10, 11
- Jan. 23, 24, 25
- Feb. 6, 7, 8
- Mar. 6, 7, 8

LOCATION:
Livermore, CA

COST:
\$980 per day,
per person

- Enrollment is limited, so register early
- Lunch is provided
- Map and hotel information will be forwarded with registration confirmation



Intensive Hands-on Instruction

Tuesday - Basic earthwork takeoff

Learn basic takeoff entry of original ground and proposed design from PDF images. Topics include data entry, editing, quantity analysis and the formatting of earthwork reports. Also covered is geo-referencing the earthwork takeoff for viewing on Google Earth and provide the field with the cut/fill map and plan sheets on their smartphone.

Wednesday - Advanced earthwork takeoffs from vector PDF's and CAD files

Speed up the takeoff process by using vector PDF and CAD files to complete your earthwork takeoff. Topics include vectorizing PDF files, transferring data, assigning elevations to existing and design data lines. Also covered is geo-referencing, calculating volumes, reviewing the takeoff in Google Earth and outputting the KMZ file to AGTEK's SmartPlan mobile app. Additional tools covered are templates, over-excavation, autopad, map projection, plan-profile and staging surfaces.

Thursday - Materials, underground and highway takeoff

Learn to create a structures list, takeoff material and underground quantities from PDF images and linework imported from AGTEK earthwork files. For highway, you will learn basic cross section and plan view earthwork takeoff from PDF and LandXML files to create a mass diagram analysis and 3D models of original and proposed design.

Prerequisites: Students should have prior plan-reading experience and basic computer skills.

Yes, reserve my place(s) for the following dates:

Month: _____

Tue. Basic Sitework Wed. Advanced Sitework Thu. Material/UG/Highway

Name _____ Title _____

Company _____ E-mail _____

Address _____ Phone-Cell _____

City, State, Zip _____ Phone-Office _____

E-mail registration form to
Jreichley@agtek.com
or

Fax registration form
to: (925) 606-9320